



Spectrophotometer

Reliability & Variety

PEAK Instruments Inc.

C COMPANY PROFILE

Our Promise

Respond to customers and provide solutions in 8 hours.

Our Mission

Provide high quality products and services.

Our Vision

To be a well-known brand for analytical instruments.

PEAK Instruments Inc is located in Houston, TX-77084, where our head office and warehouse are also located, which is a high tech enterprise integrated with R&D, production, sales and service of spectrophotometer, pH meter, conductivity meter, dissolved oxygen meter, ion meter and balances, which have wide applications in the following areas like metallurgy, pharmacy, food, health, institutes, biological chemistry, life science, petrochemical industry, quality control, environmental protection, electrochemistry and water quality analysis, etc..

We have professional teams of management, R&D, production, QC, sales and technical support, which guarantee good quality products, competitive prices and efficient service for global customers. We have CE and ISO9001 certificates. We continuously absorb new ideas and technologies to improve our products and services in accordance with the concept of innovation, quality and service.

We have steady growth and good reputation in the markets of more than 95 countries, like USA, Argentina, Italy, Germany, Spain, Russia, Korea, India, Indonesia and Egypt.

T-9100/9200



Introduction

Excellent optical system, high level mechanical system, advanced circuit control system, rigorous production process, friendly and intuitive software interface, good technical specifications, stable and reliable performance can meet the analysis requirements from high level and professional customers.

Main Features

Appearance and internal structure

Modern and elegant appearance, extendable design, separate structure design for optical and circuit system can efficiently avoid the loss of photometric energy.

Convenient and intuitive operation interface

This series has 7-inch high resolution color capacitive touch screen and newly developed UV-SUPER2.0 software (optional) with strong functions, which make the operation simple and easy.

Excellent performance and stability

Totally enclosed monochromator and optical mirror coated with SiO₂ guarantee the optical components are not influenced by environment.

- ① Osram and Milas lamps.
- ② Newly improved screw pole drive structure makes good wavelength repeatability and high wavelength accuracy.
- ③ Totally new design, superior materials and rigorous production process.

Advanced photoelectric test system

- ① 32 bit ARM11 microcontroller with clock speed up to 533MHz.
- ② 20 bit analog digital device specialized for photoelectric data collection and processing from BB company.
- ③ Support internal data storage, there are standard RS232,USB(A) and USB(B) port.

Simple and convenient maintenance

- ① Socket type lamps make the optical adjustment not necessary and maintenance much easier.
- ② Separated optical and circuit system has no cross influence and make the instrument more reliable.

Specifications

MODEL	T-9100	T-9200	T-9200S	T-9200A
Display	7 inch TFT color capacitive touch screen			
Wavelength Range	190 - 1100nm			
Optical System	Single Beam	Double Beam		
	Holographic grating, 1200 lines/mm			
Spectral Bandwidth	2nm	2nm	1nm	0.5,1,2,4nm
Wavelength Resolution	0.1nm	0.1nm	0.1nm	0.1nm
Wavelength Accuracy	±0.3nm	±0.3nm	±0.3nm	±0.3nm
Wavelength Repeatability	≤0.2nm	≤0.2nm	≤0.2nm	≤0.2nm
Photometric Range	0-200%T, -0.3-3.0A, 0-9999C (0-9999F)			
Photometric Accuracy	0.2%T (0-100%T), ±0.002A(0-0.5A), ±0.004A(0.5-1A)			
Photometric Repeatability	≤0.15%T (0-100%T), 0.001A(0-0.5A), 0.002A(0.5-1A)			
Scanning Speed	Low, Medium, High (up to 1500nm/min)			
Stray Light	≤0.05%T@220nm,360nm			
Baseline Flatness	±0.003A	±0.002A	±0.002A	±0.002A
Drift	0.003A/30min @500nm	0.002A/30min @500nm	0.002A/30min @500nm	0.002A/30min @500nm
Noise	0.0003A@500nm			
Working Mode	T,A,C,E			
Wavelength Setting	Automatic			
Detector	Solid Silicon Photodiode			
Light Source	Tungsten Halogen/Deuterium Lamp			
Output Port	RS232, USB(A),USB(B)			
Power Requirements	AC 110-220V 50-60Hz			
Humidity Range	Less Than 85%			
Shipping Dimensions and Weight	790*660*370mm, 28kg			940*740*510mm, 52kg

UI Design (Touch Screen)

Photometry

There are three test modes.
Absorbance, transmittance and energy.



Quantitative Measurement

To test sample solution concentration, you can choose different methods like coefficient, standard curve, linearity, linearity through zero and quadratic. Up to 15 standard samples can be used to create a curve. Advanced arithmetic makes curvilinear regression more precise and test data more accurate.



Kinetics Measurement (Time Scanning)

To test the sample chemical reaction process by fixed time scanning the sample solution with fixed wavelength. The equipment can calculate its changing rate after entering the corresponding parameters.



Wavelength Scanning (Qualitative Test)

To test sample solution absorbance peak, can scan the sample characteristic curve of any wavelength range between 190 and 1100nm. You can look up the peak value on the standalone device.



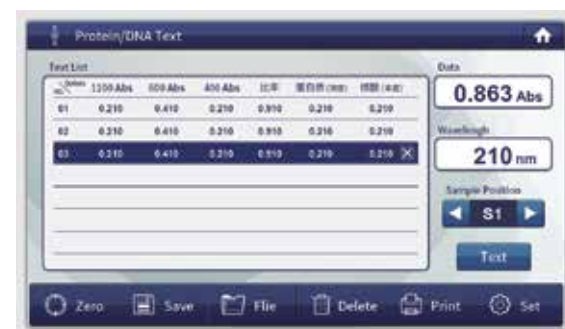
Multi Wavelength Measurement

It is much more convenient for users to test the absorbance of several wavelengths for the same sample solution, which is much simpler than single wavelength testing.

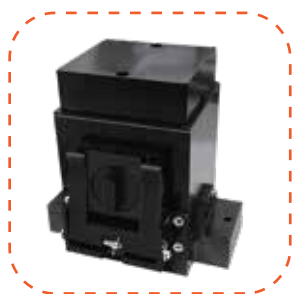


DNA/Protein Measurement

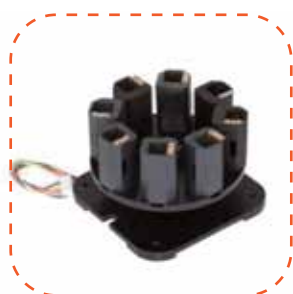
There are two test modes and formulas based on absorbance ratio 260nm/280nm or 230nm with subtracted absorbance at 320nm.



Accessories



Integrating Sphere



Automatic 8-position round cell holder



Tube rack



Manual 4-position film holder



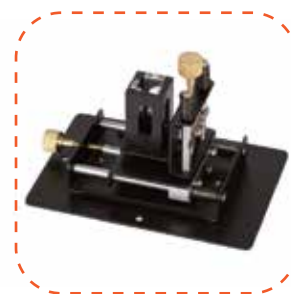
Manual 4-position 10cm cell holder



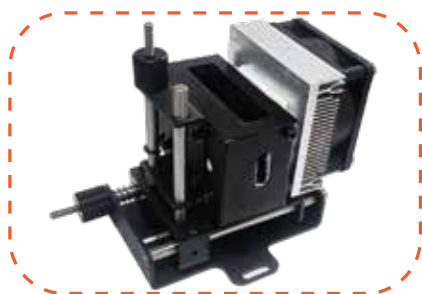
Single hole film holder



Single hole 5cm cell holder



Adjustable micro cell holder



Peltier Thermostat



Automatic Sipper